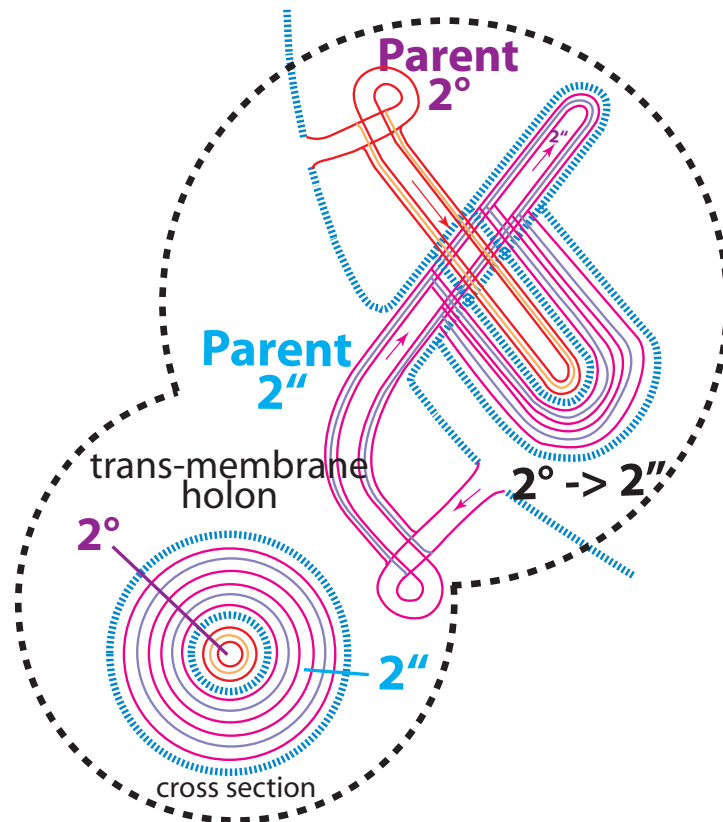


e-Book

LIFE, HOLONS, COMPLEXITY AND THE TATHAGATA WOMB

.... building complexity from a single membrane



by Dirk Laureyssens

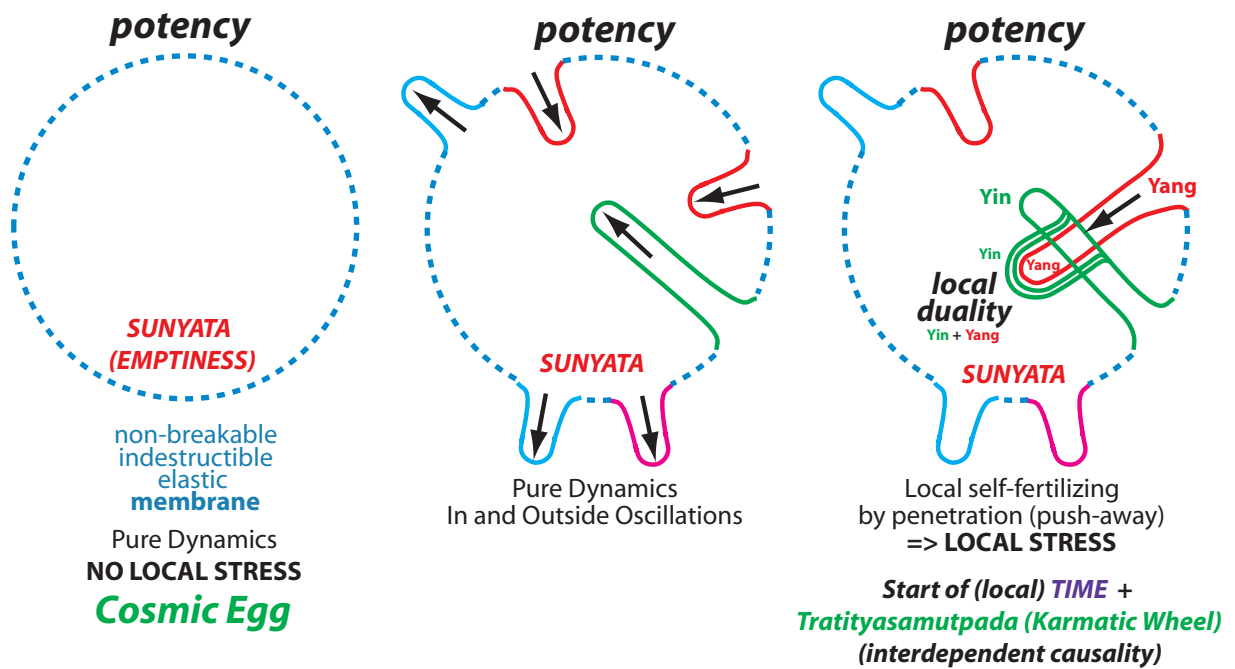
(dirk.laureyssens@gmail.com)

www.mu6.com

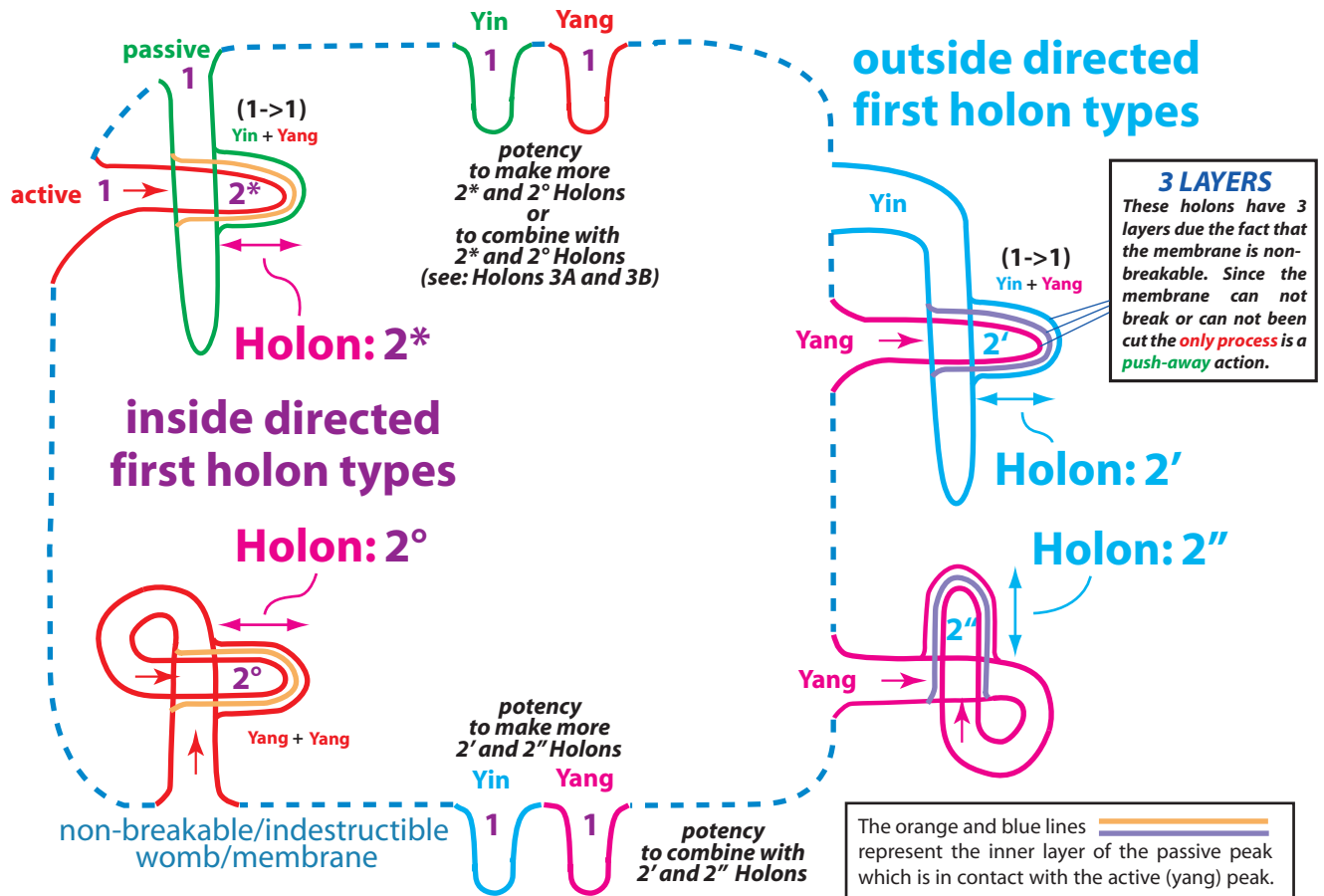
DRAFT VERSION - OCTOBER 2005

© Dirk Laureyssens 2005. All rights reserved. Free electronic distribution.

1. The indestructible Tathagata Womb



This brings two possible **FIRST** holon types (baskets) on the inside (Yang) of the sphere and two **FIRST** holon types at the outside (Yin) of the sphere. Together with the membrane they will create the complex universe we know and other unknown universes.

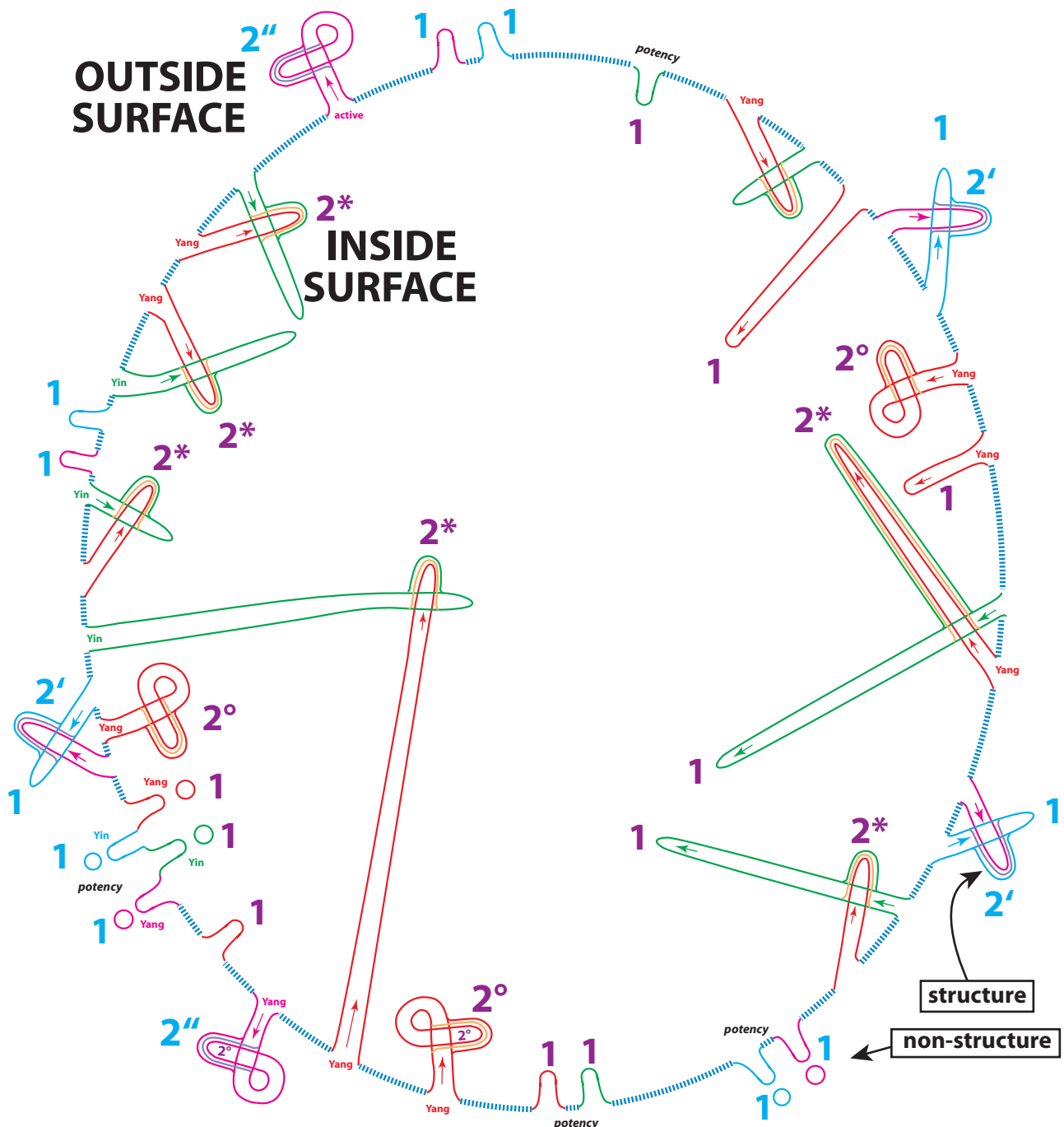


These two basic holon types show how the Tathagata Womb (the Membrane) can **restructure itself** locally in a "**stress**" **co-existence**. The rest of the membrane keeps the full potency. These baskets of co-existence have in 2* en 2' a central yang part (active) and a yin part (passive: the surrounding cover). In 2° and 2'' the same membrane layer triples itself. A holon has thus membrane layers (also called sheaths, covers, **koshas** or **vijnanas**) joined together which make a basic local "structure". "Appearance" is always on the outside of a holon.

2. The Holon Types 2*, 2°, 2' and 2'' and the Membrane potency

The Membrane - the Tathagata Womb or Cosmic Egg - has yet created on certain spots two different yang holon types inside the sphere and two other yin type holons at the outside. Such holons can be created on every spot of the membrane. We can say that the membrane has the potency to create trillions and trillions of such first 'space particles' or 'first holons'. The first holon type on the inside surface (2*) contains a yang and a yin component. The second inside holon (2°) is pure Yang since it is created by a loop on itself. On the outside we have a similar development bringing the two holon types 2' and 2'', but we consider 2'' to be more yin than 2' since a loop is a more yang action.

We see that there are always **3 layers** in the first holons 2*, 2°, 2' and 2''. **3 layers**: One layer from the active peak which is covered by 2 layers of the passive peak (first layer pushed away during the entry and the second layer which is push away during the leaving of the passive peak). So in the first holons the membrane has **tripled** locally.



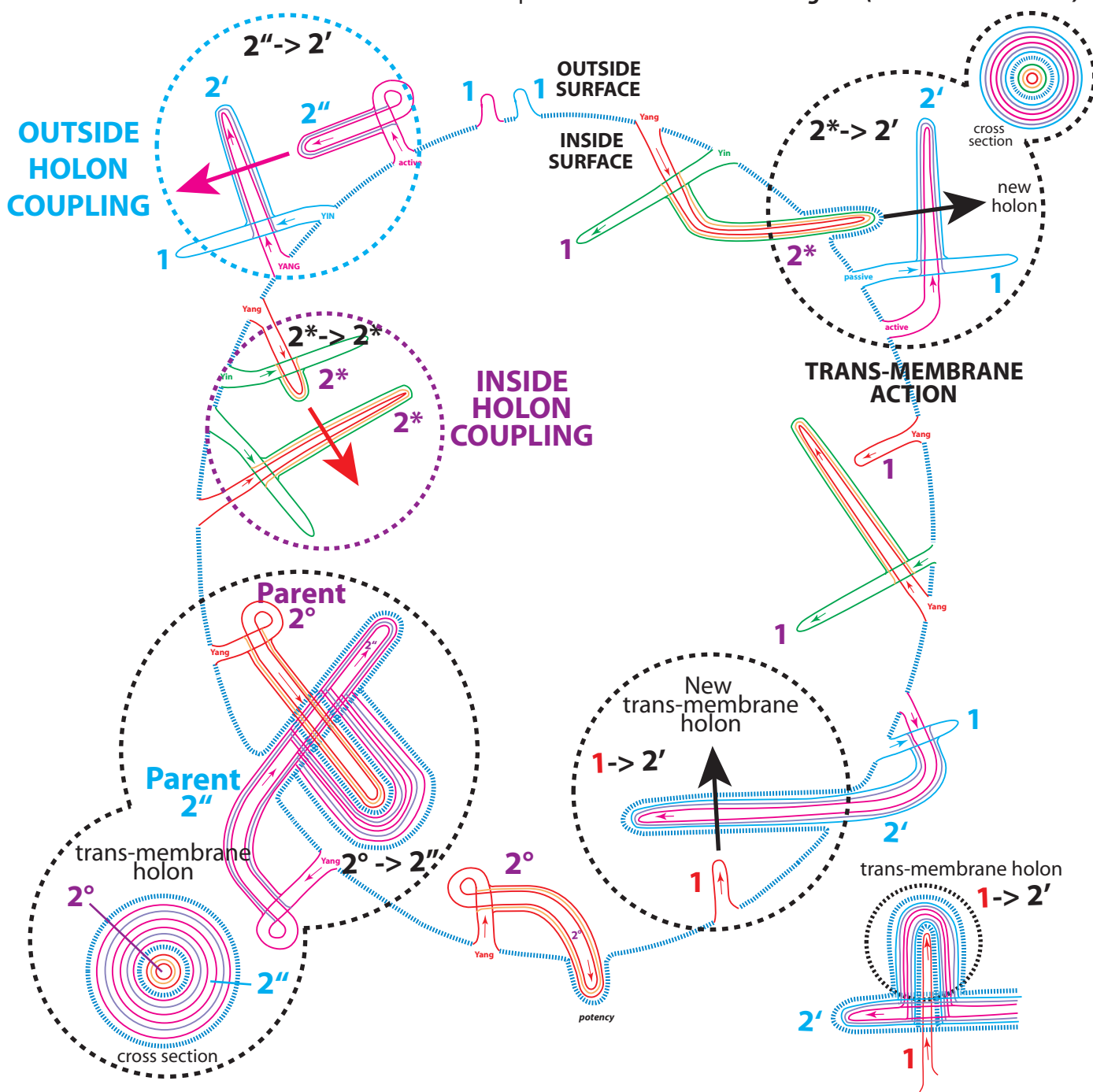
The non-breakable Membrane - the Tathagata Womb or Cosmic Egg - has now created dynamically on it's surfaces the basic **building elements for the Universe**. Every building element is still "membrane", but membrane under local "stress". These holons are still "empty" but their **effect** is **different** from the original membrane. It is structured.

3. The Inter-action of Holons and the Trans-action of the Holons through the Membrane

The holons on inside and outside of the Membrane - the Tathagata Womb or Cosmic Egg - can interact with each other. This can happen on two levels.

A. The FIRST LEVEL are **combinations of holons of the same membrane side** with each other. In example: An outside holon 2'' can pelastrate (penetrate) an outside holon 2', or a 2* holon can pelastrate another 2* holon.

B. The SECOND LEVEL are **combinations of holons of different side**, which we call a **"trans-membrane action"**. In example: An inside holon 2* can pelastrate (penetrate) an outside holon 2' **but with a layer of pure membrane-between them!** Such a trans-membrane holon will couple two holons of **different origins (like MIND + MATTER)**.

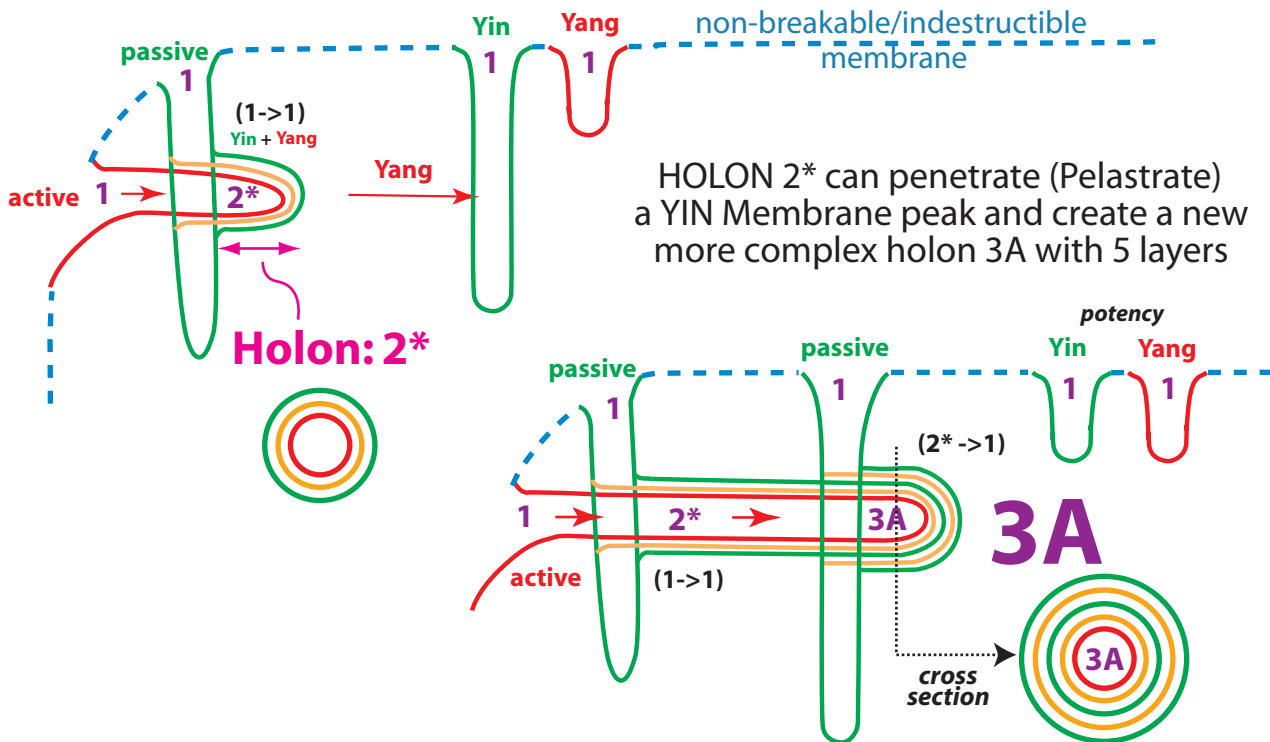


Here is shown that trans-membrane holons contain topologically two **parent holons** of another kind. In a much more complicated design this kind of combination will explain the way spiritual energy (i.e. Chi) and the body are coupled, or this can explain how the process of consciousness works.

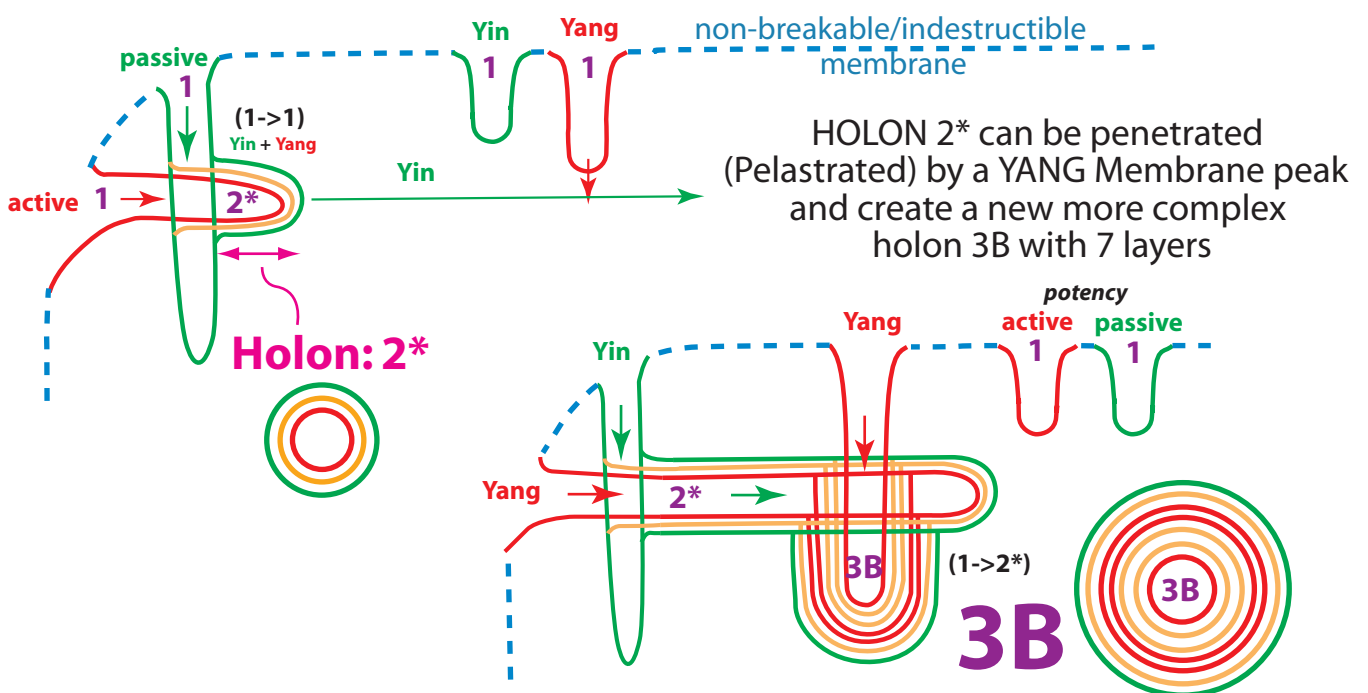
4. New extra combinations of an inside directed first holon 2*

A holon 2* can interact in two ways with the membrane (1), first as an active penetrator which bring a new more complex holon 3A, and secondly as passive holon, being penetrated by a membrane peak resulting in new more complex holon 3B.
Next designs show that **the result is different!** 3A has 5 layers, and 3B has 7 layers.

POSSIBILITY 1: HOLON 2* as ACTIVE HOLON CREATES A NEW HOLON

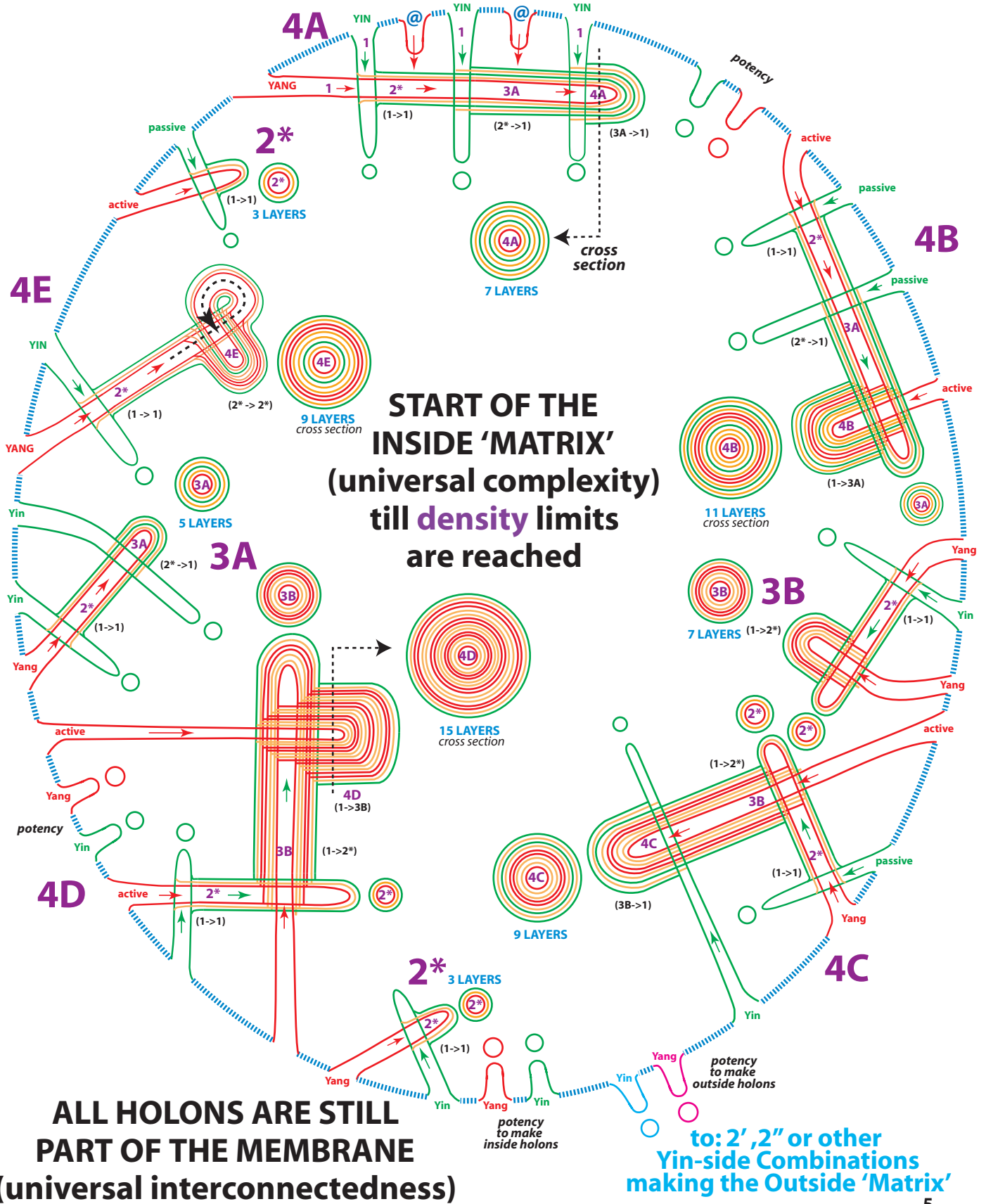


POSSIBILITY 2: A NEW HOLON IS CREATED and HOLON 2* acts as PASSIVE HOLON



5. New extra combinations of the holons 3A and 3B, and 2*

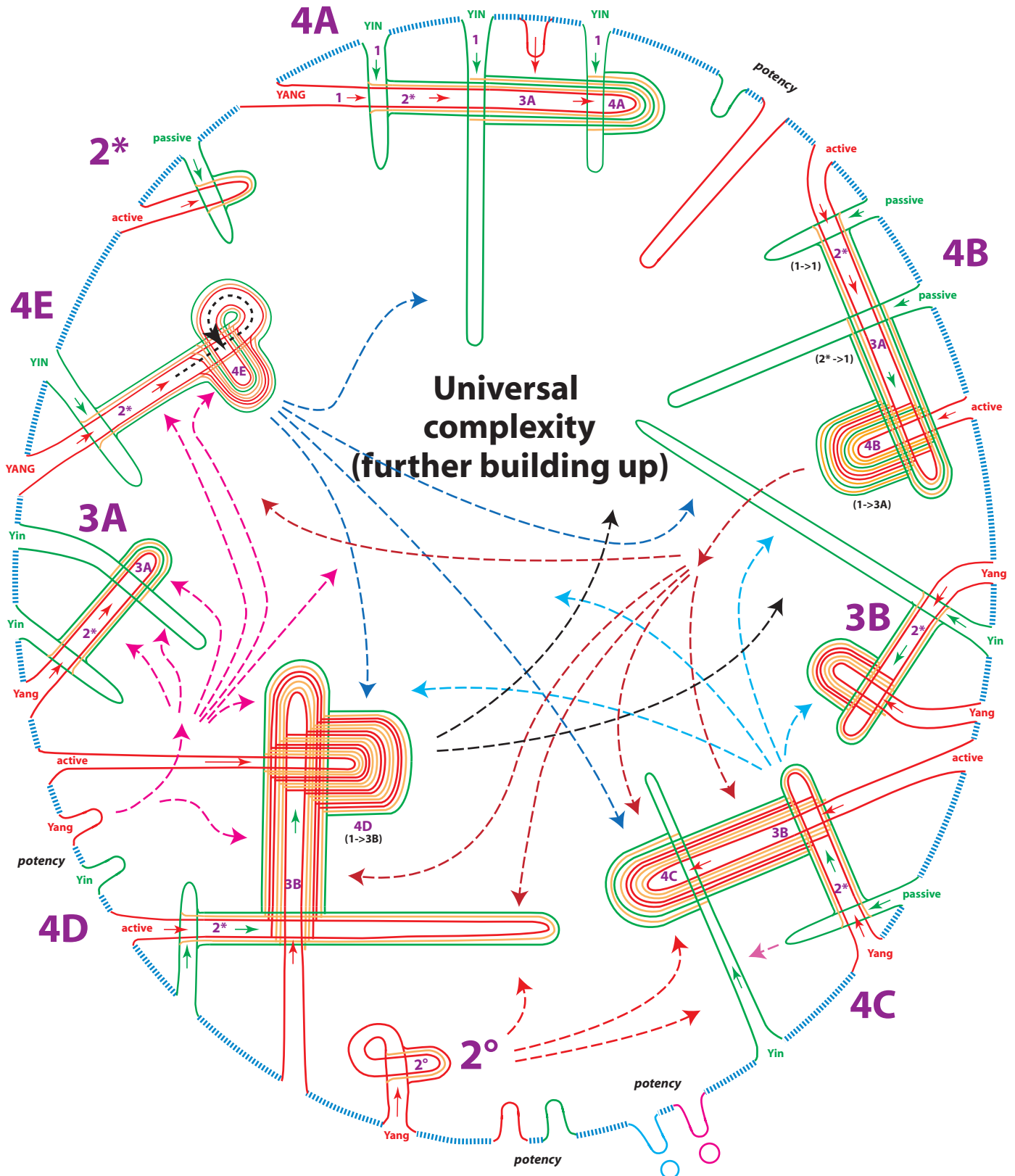
A holon 2* has created two new holon types, 3A and 3B, and these can make also combinations with the membrane resulting in new more complex holons, 4A, 4B, 4C and 4D. Holon 2* can also pelastrate itself: Holon 4E. All holons have a **UNIQUE LAYERING**. But all holons can make also combinations with other holons (i.e. 4B ->4D, 3A ->4E, etc.). The Matrix of combinations is more complex than normal matrix because ALL parent channels of a holon can be pelastrated too (see @)



6. The Holon Building Blocks

The potency of the indestructible membrane - or Tathagata Womb or Cosmic Egg - created on local spots several holons, each type with another layering. Since the membrane vibrates all the layers in the holons vibrate too. They vibrate however each in a unique way after their harmonic or unharmonic internal interaction.

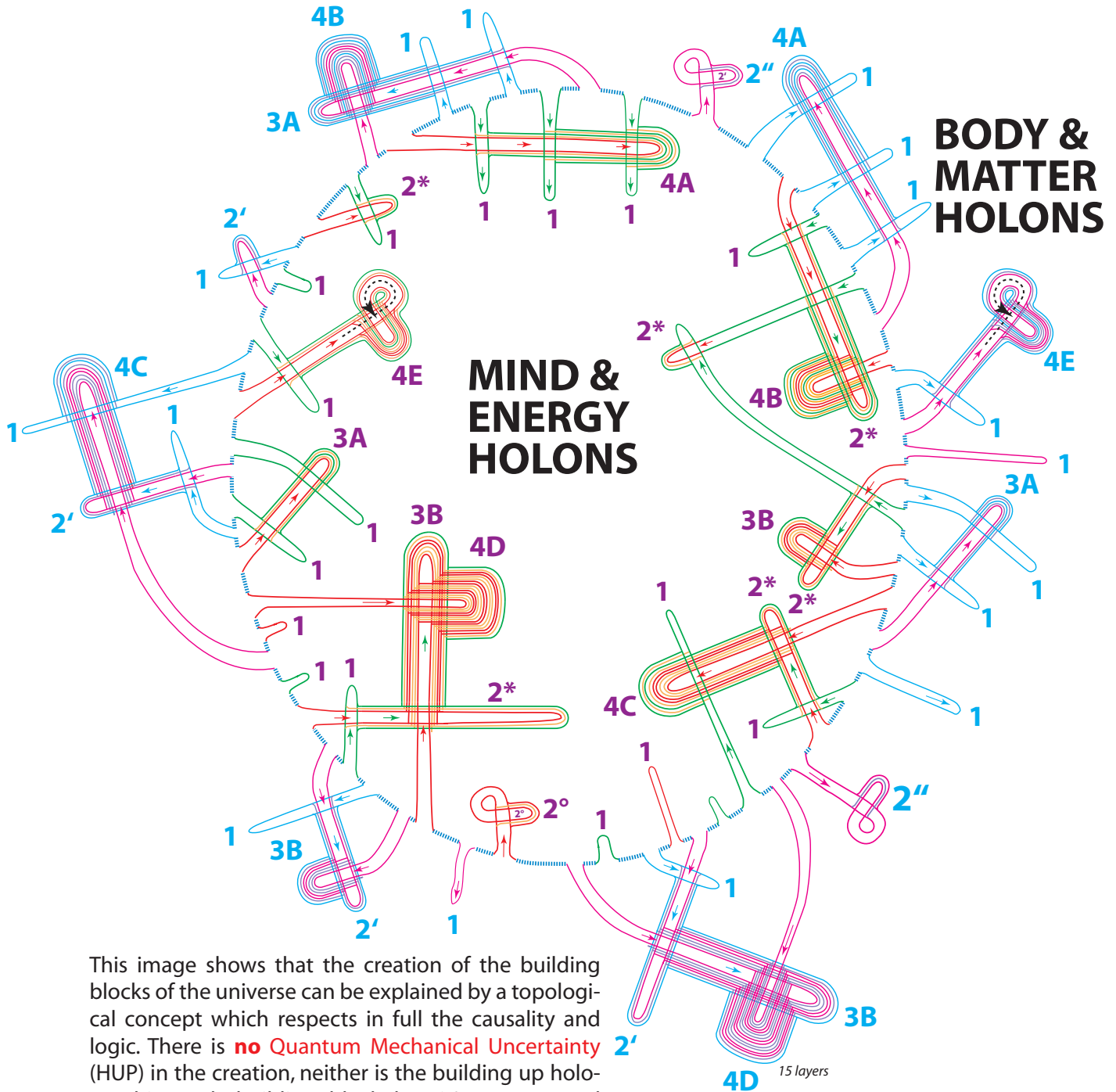
Next image shows how the inside building blocks can combine with each other and with the membrane to make new more complex holons of the 5th, 6th and higher levels.



7. The Membrane Inside and Outside

The potency of the indestructible membrane - or Tathagata Womb or Cosmic Egg - creates on local spots several holons, each type with another layering. Since the membrane vibrates, all the layers in the holons vibrate too. They vibrate however each in a unique way after their harmonic or unharmonic internal interaction and combinations, so after their unique structure.

Holons can be build - and will decay too - on the inside (yang) side of the membrane, and also on the outside (yin) side of the membrane. Inside holons can be seen as energetic combinations which are also mind related. The outside holons are the physical holons, such as the matter related fundamental particles and atoms, which build up molecules, which build up objects and our body.



This image shows that the creation of the building blocks of the universe can be explained by a topological concept which respects in full the causality and logic. There is **no Quantum Mechanical Uncertainty (HUP)** in the creation, neither is the building up holographic. Each building block has it's own natural history, even every fundamental particle is unique.

We have to add to this design the possibility of trans-membrane actions (and holons) as explained before. Trans-membrane holons have two parents of a different origin (inside -> outside, or outside -> inside) and they are always separated by a pure membrane layer.

8. Trans-Membrane Actions and Conscious Life

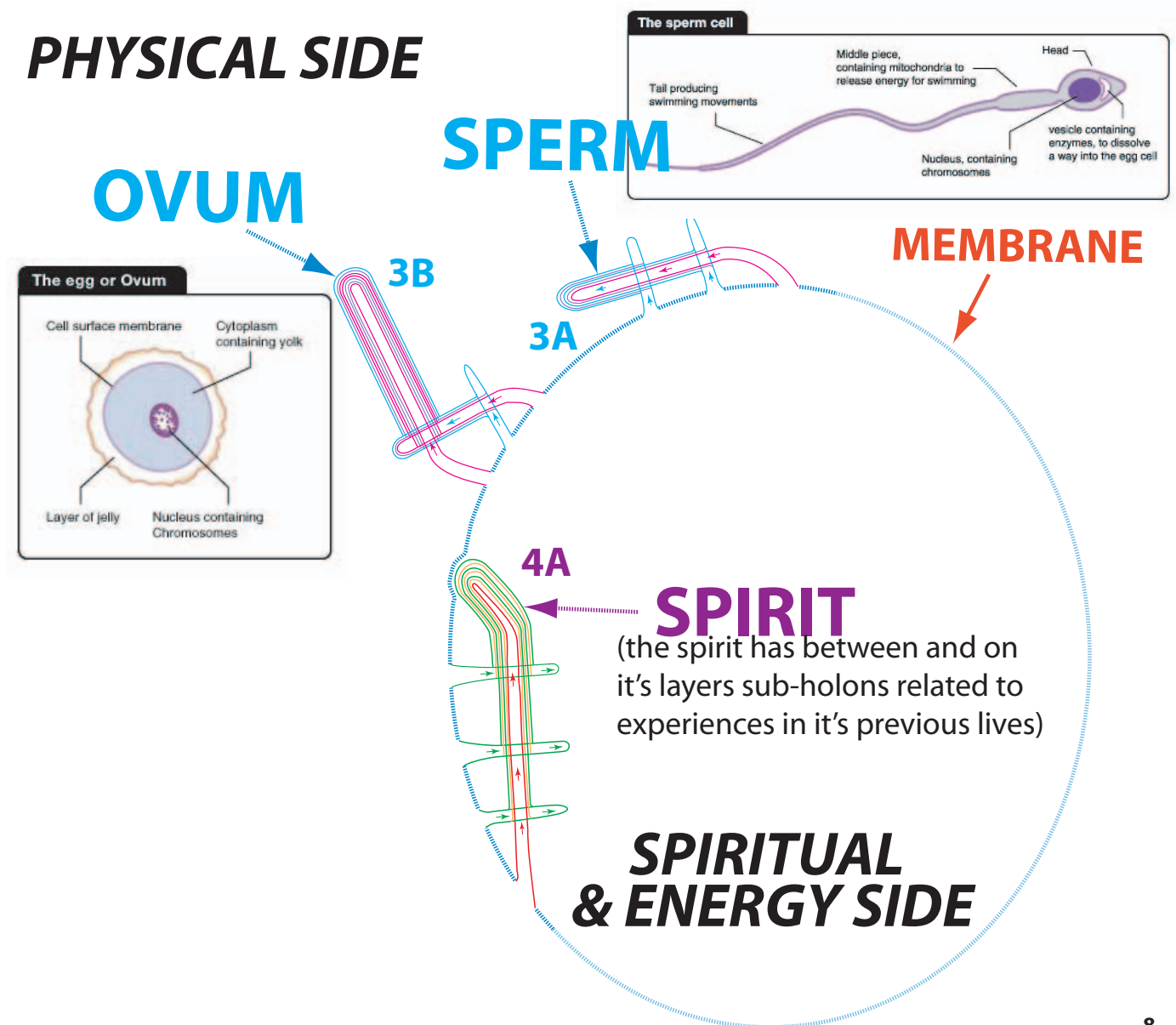
The mystery of life and consciousness triggers humanity for ages. How can a physical body contain a spiritual body, and make together during life a unity?

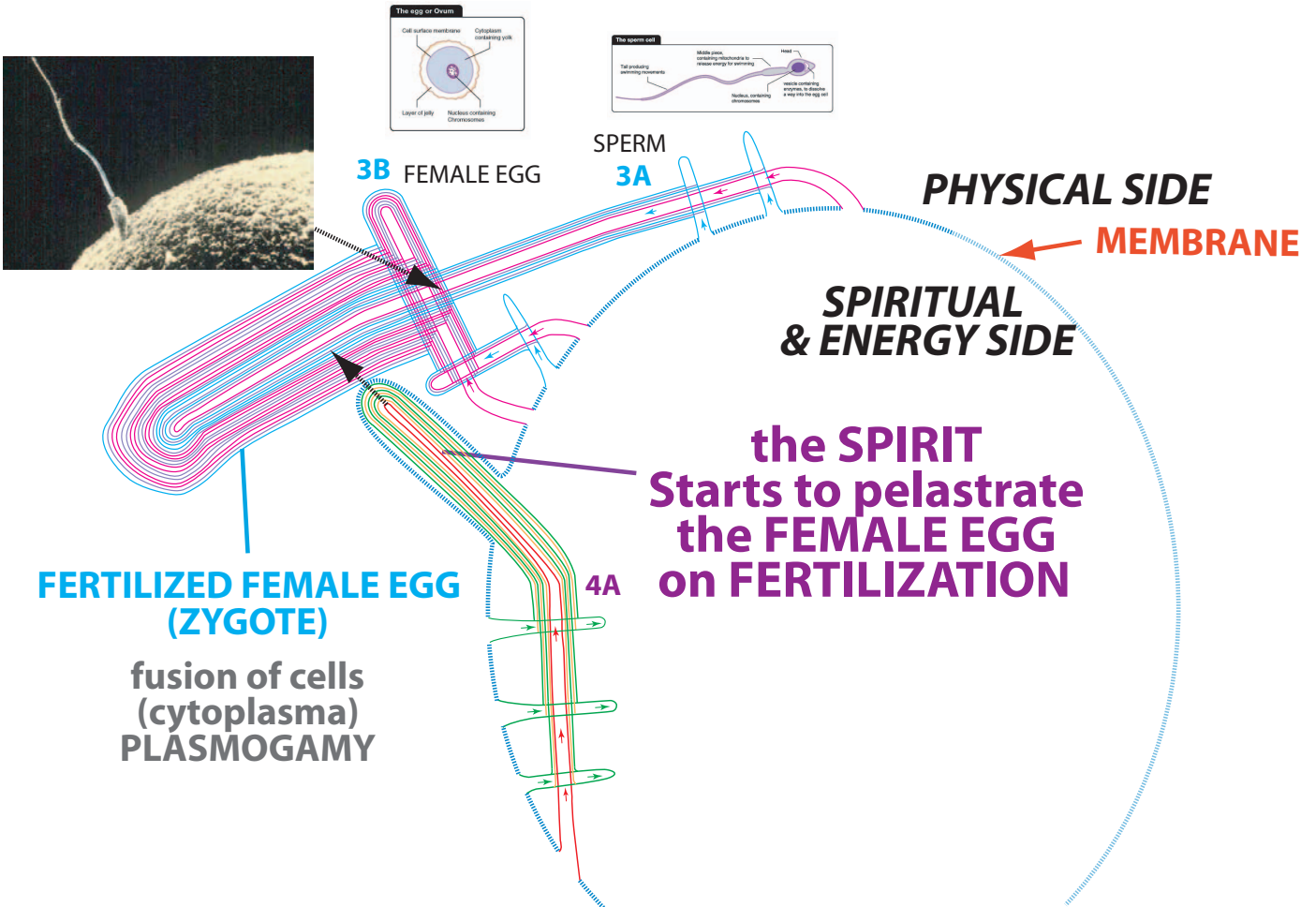
If we accept a basic postulate we can understand this enigma. The postulate is simple: **The origin of everything is a non-breakable, indestructible background membrane that is very elastic.** In Buddhist terms this membrane would be the **Tathagata Womb** or in Hinduist terms: **The Cosmic Egg.**

In next image we see that on the (outside) physical level two human gametes are created: a female egg (ovum) and male sperm. Of course they are entities which are separate from the female and male body. So they have their own direct connection with the membrane although they are created by the female and male parents. The image shows a very simplified structure of the ovum, sperm and spirit. For example the ovum and sperm contain each 23 specific chromosomes so they may have in reality maybe 100 membrane layers or more.

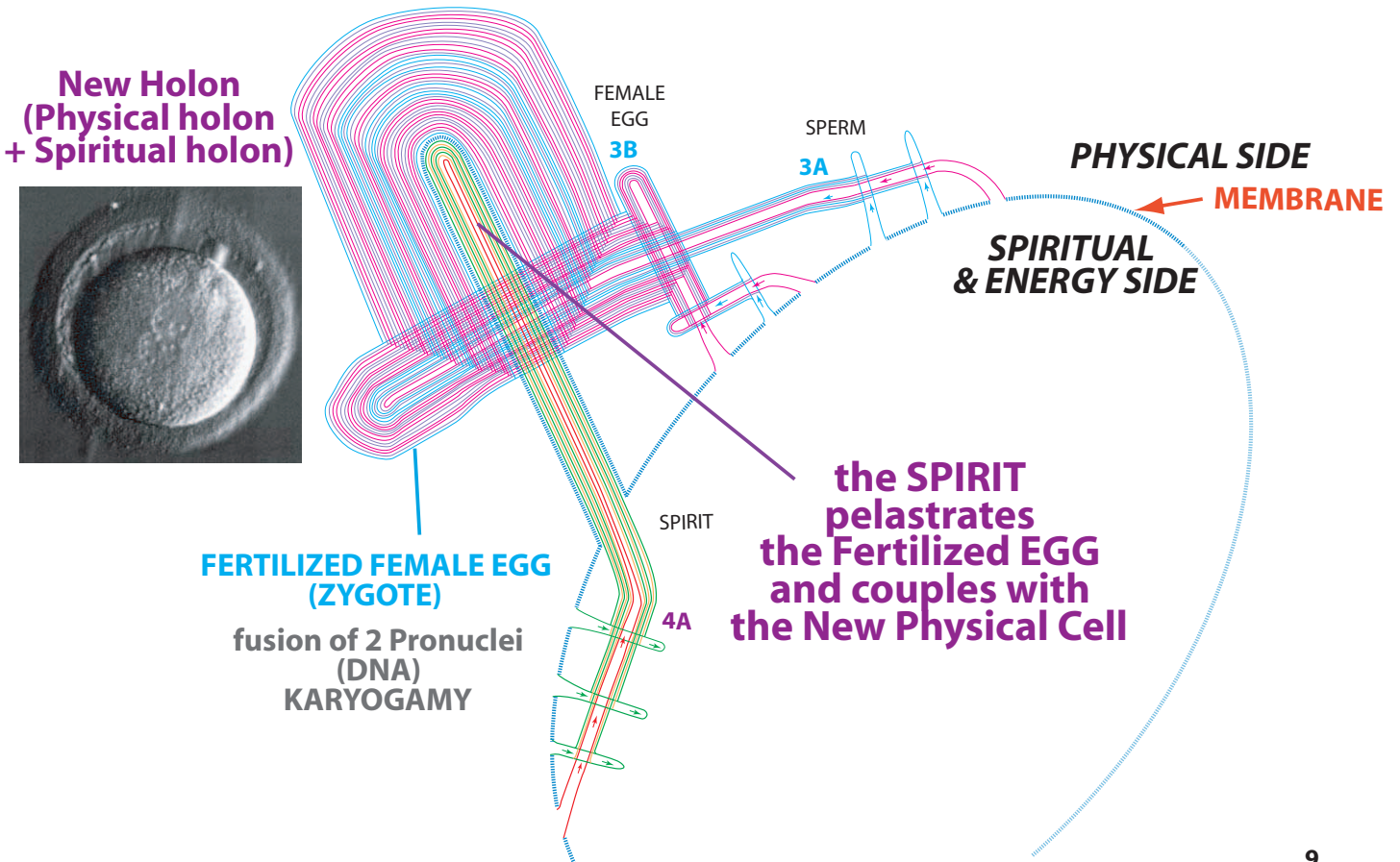
On the other side we see a spiritual entity (called a 'Spirit') that wants to re-incarnate. This "Spirit" has a number of knowledge sub-holons (sub-holons) stored in his structure caused by previous lifes. We can call this karma-knots of information. These information-knots in the spirit holon vibrate each in a unique way.

In the physical world we see now that the male sperm is going to contact the female egg (ovum) by a sexual act of the parents. This is the situation:



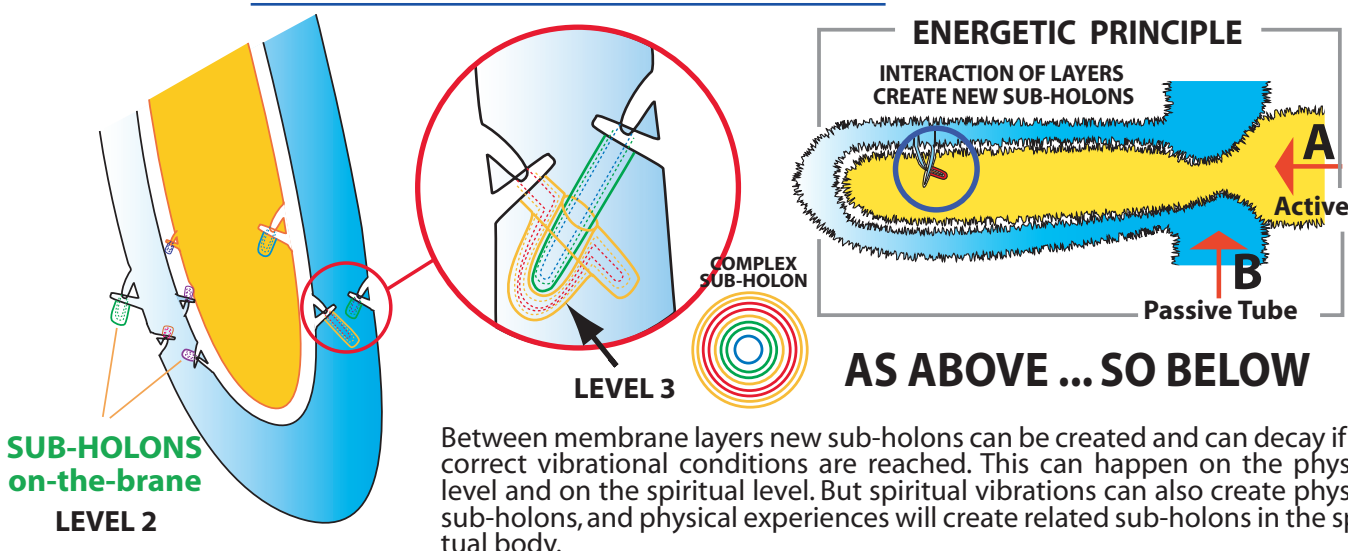
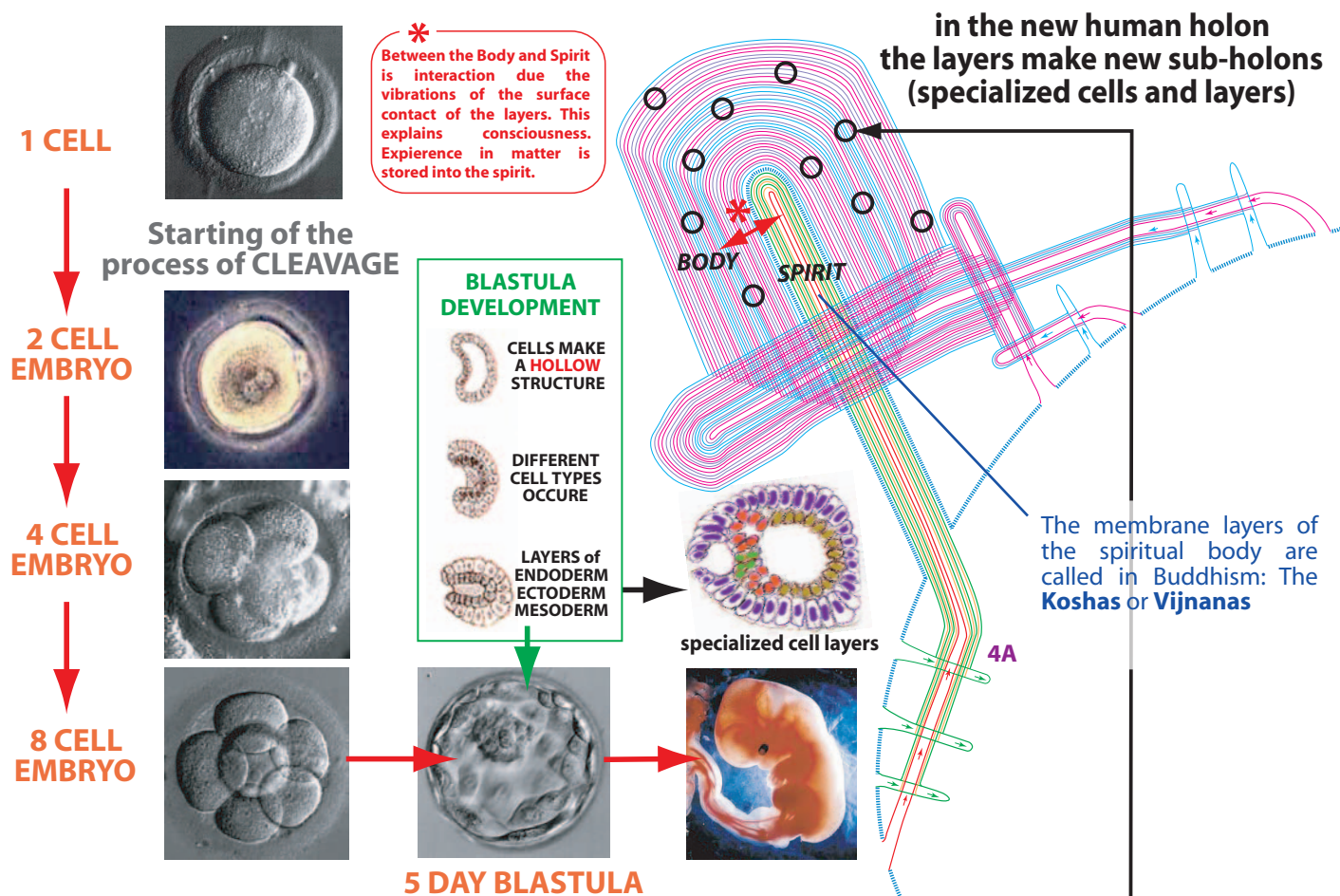


Just a fraction after the moment of the fusion of the physical sperm with the physical Ovum the non-physical Spirit pelastrates (penetrates) the zygote cell. This makes a new holon which has a unique physical (DNA/genes) structure coupled with a unique Spiritual dimension. The layers of both parts exchange vibrations and interact with each other since they are coupled together.



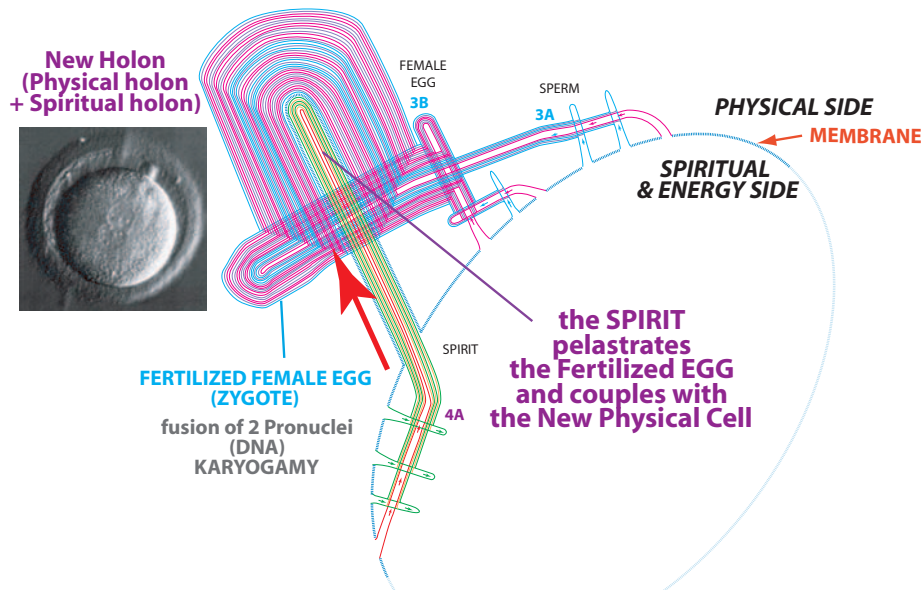
The new human cell has a physical part and a spiritual part which are joined. They will stay together as long as the physical body exists. When the physical body will die (decay), the spiritual body will withdraw (but keeping it's sub-holons).

Next image shows how the first cell splits internally in more and more cells. This process is called cleavage. Remarkable is that after some time the growing number of (millions of) cells start to make a hollow shape, similar to the basic membrane. In the "Gastrula-phase" this hollow "balloon" is bending in a two layer structure with inside still a hollow space. Here we see a similarity with how two parts of the membrane make a new holon. During the blastula and gastrula phase the cells start to split in specialized cells and layers which are called in embryology the endoderm, ectoderm and mesoderm. The ectoderm creates the nerve system and skin, the endoderm the digestive and respiratory system and parts of organs, and the mesoderm creates i.e. the muscles, bones, blood and connective tissue.



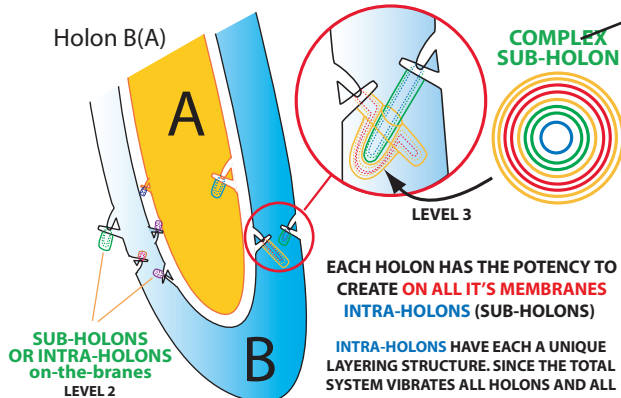
TOPOLOGICAL STEPS OF LIFE AND DEATH

FERTILIZATION: The Spiritual holon peastrates the Physical holon



DURING LIFE: Sub-Holons are created on the Layers = Our Memories

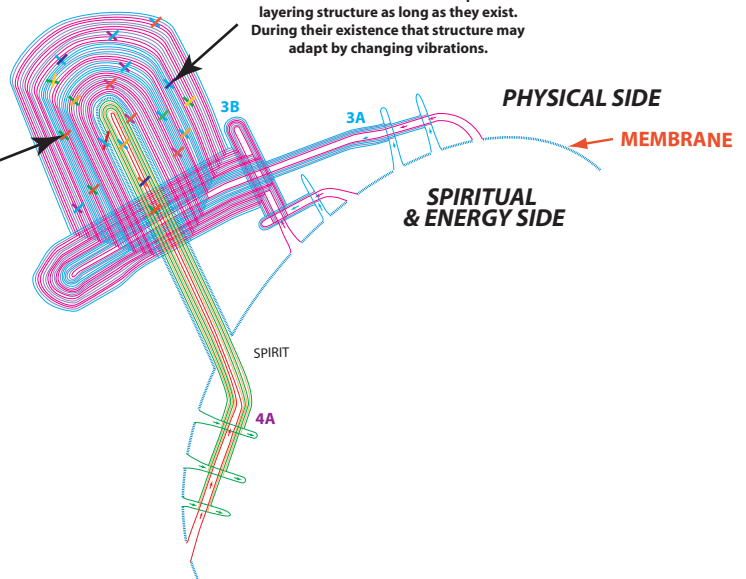
During LIFE the HUMAN holon stores Experiences as sub-holons in the membrane layers of the physical body and the spiritual body. These sub-holon are like Bells (with a clapper and a covering body) and have each their proper frequencies.



INTRA-HOLONS HAVE EACH A UNIQUE LAYERING STRUCTURE. SINCE THE TOTAL SYSTEM VIBRATES ALL HOLONS AND ALL INTRA-HOLONS VIBRATE TOO. THAT UNIQUE VIBRATION / FREQUENCY IS UNIQUE IN-FORMATION.

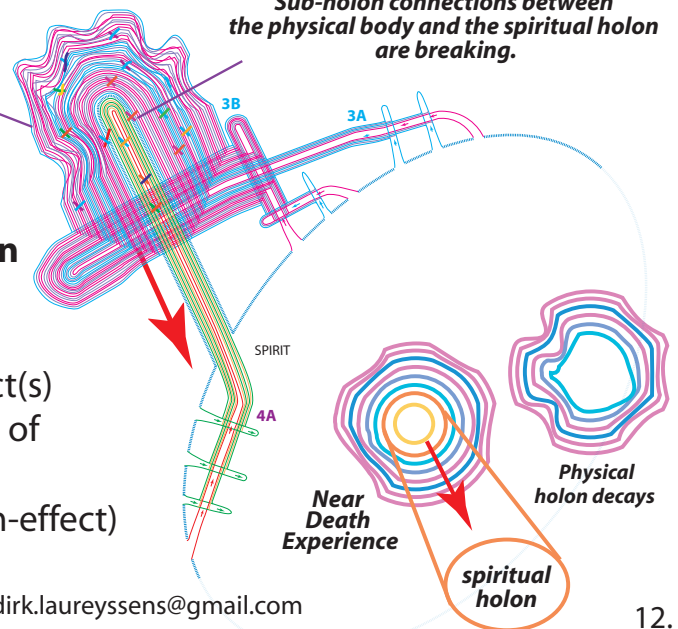
Sub-holons or Intra-holons change the flexibility of the membrane layers involved and that will change consequently also the total vibration of the mother holon

INTRA-HOLONS have each a unique basic layering structure as long as they exist. During their existence that structure may adapt by changing vibrations.



Sub-holon connections between the physical body and the spiritual holon are breaking.

Damaged Physical holon



DURING MOMENT OF DEATH: Due to physical damage the Spiritual holon leaves the covering Physical holon.

This throw back creates the NDE-tunnel-effect(s) in the Spiritual holon, where the connections of the sub-holons (the memories) are breaking. This breaking re-activates the memories. (film-effect)